

Quick Guide for using DVR

1. HOW TO START

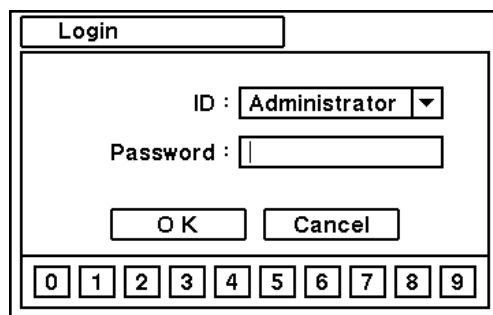
This guide covers the 4, 8, 16-channel DVRs. The DVRs are identical except for the number of cameras, audio, inputs and alarms. The illustrations and descriptions in this manual refer to the 16-channel model.



- Connect camera cables for monitoring and recording, and VGA cable for monitor display. (if you have CRT monitor use BNC connector)
- System starts automatically once the power cable is connected.

2. HOW TO LOG-IN

- Requires ID and PW to enter main menu of DVR system.
Default ID and PW are as follow: **ID: Administrator / Password: None**



- **NO Password** is set as default PW. Please DO NOT forget to set new PW for the system security. For new password setting please go to password setup menu under Password of Menu on the screen (**MENU > SYSTEM > User**).

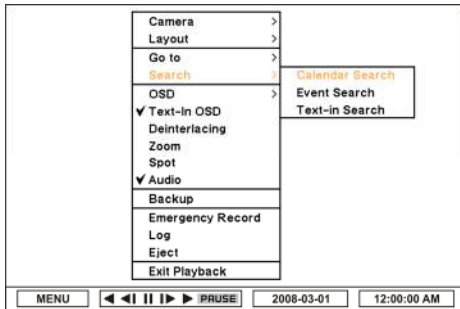
4. HOW TO PLAYBACK

- Press 'Playback' button to enter playback mode or click right mouse button to select 'Playback' option.

Below menu appears when click on the right mouse button



Select Playback to enter main menu of Playback



- Select desired search option form the main menu

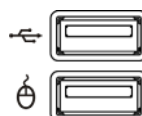
- Go to Time:** enter time/date to search specific data
 - Go to Beginning: Move to the very first recorded data.
 - Go to End: Move to the latest recorded data.

- Calendar Search:** search recorded data using the calendar format
- Event Search:** search for specific event
- Text-in Search:** provides easy search by text transactions.

*Note

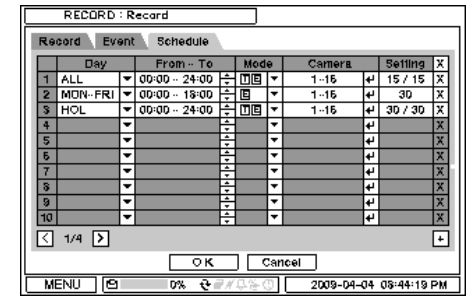
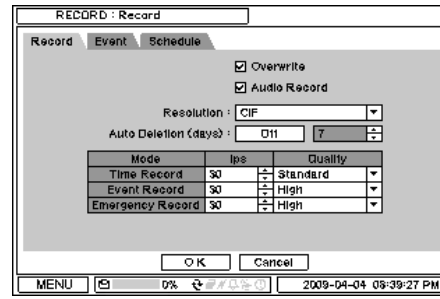
USB ports on the front panel provides following functions:

- Back Up files using USB Flash Memory or USB External HDD
- Control the system using USB Mouse
(a USB port dedicated only for mouse as picture directed.)
- Save/Load the system settings using USB Flash Memory.



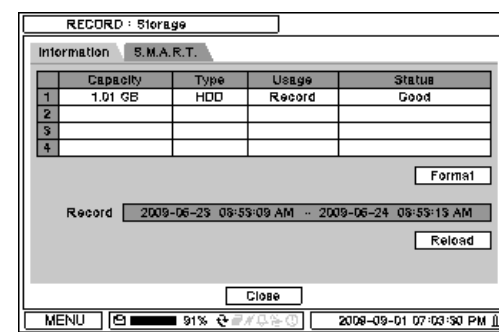
3. HOW TO RECORD

- DVR starts recording automatically when cameras are connected.
DVR will record images at Max.ips (images per second) for each camera with standard image quality as default. More detail recording options can be set in the system.
- Please refer to the manual 2-4-2. **MENU > RECORD > Record**.



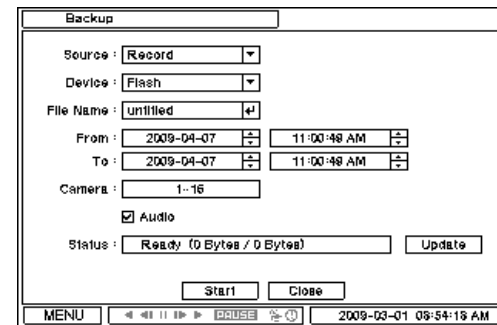
*Note

- For proper recording, recommended HDD should be installed before turning on DVR.
- HDD needs to be formatted before recording.** Please refer to 2-4-1. **MENU > RECORD > Storage** in main manual for HDD format instructions



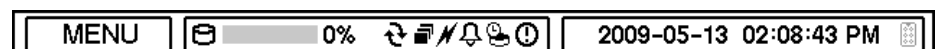
5. HOW TO BACKUP

- Press the 'Backup' button or go to Backup menu under Contextual Menu appears by clicking right button on the Mouse to enter Backup menu.
- Use USB Storage (USB Memory or ODD, HDD) to backup recorded data. Recommend to have USB device connected before go into back up menu.



- More detail instructions on backup can be found in the main manual. Please refer to the manual **4. BACKUP**

* ICON GUIDE



MENU : Pressing the Menu will bring up the main menu list

% : Shows the % of HDD being used

: Turns on when the HDD is set to be overwritten.

: Sequence display mode

: Turns on when the system is connected to the Nemon.

: Turns on when the Alarm is being activated

: Archiving Mode

: E.REC (Emergency Recording) mode

: Remote Controller

: Time-lapse Recording

: No Recording

: Event Recording

: Pre Event Recording

: E.REC (Emergency Recording)

: Motion Detection

: Sensor Detection

: PTZ Camera

: Backup

: Clip Maker

: Instant Backup

: Text-in

: Video Loss

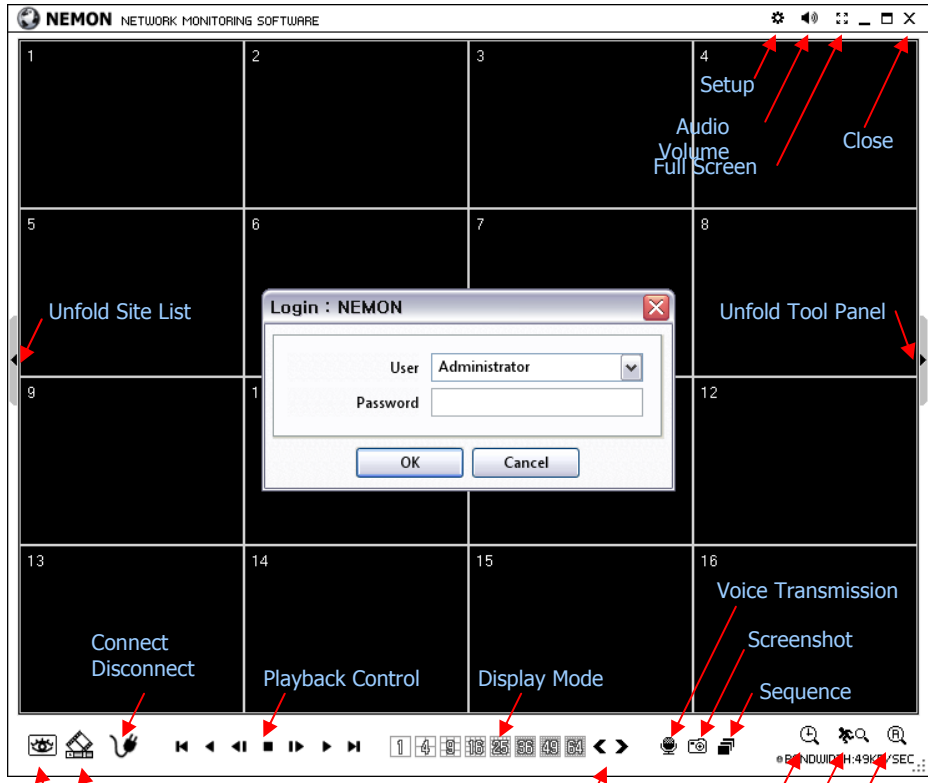
NEMON2-Network Monitoring S/W

1. Starting the Software

Double click on 'Nemon2' icon on PC to run the software.
Main screen of the remote software appears as shown below.

Note: A minimum resolution should be more than 1024 x 620; and a recommendable one is over 1280 x 1024.

2. How to Use NEMON2



The Log In window will appear when Nemon program starts. Select user level as each user will have different authority level over the system control depend on the pre set up. Enter OK once the user level is selected as the default password is 'none'.

Live: Click the image to enter the live mode.

Playback: Click the image to enter the playback mode.

Connect / Disconnect: Click button to connect a site as live or playback mode.

Playback Control: Use buttons to control playback images.

Display Mode: Select display modes. (single screen, 4, 9, 16, 25, 36, 49, 64 and full screen)

Change Display Page: Change Display Mode to Previous or Next page in camera order.

Voice Transmission: Click button to transmit remote voice to the local DVR.

Screenshot: Capture the current screen and save it as a image file.

Sequence: Display images on pre selected sites in sequence mode.

Setup: To change set up on Nemon S/W or a remote DVR.

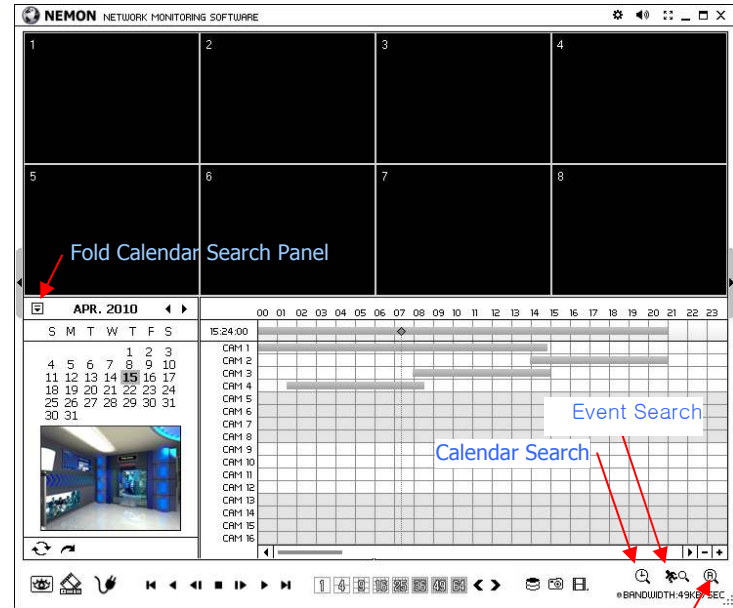
Audio Volume: Click Audio icon to select audio volume and mute options.

Select a camera to receive Audio of the selected camera (highlighted in border lines).

Full Screen: Display image on full screen mode.

Close: Click the icon to close the software

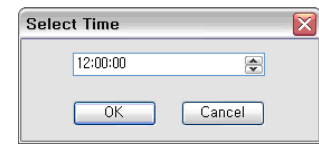
3. Remote Playback



Playback Control Button

- ▶ Beginning
- ◀ Reverse Play / Rewind
- ◀◀ Step Backward
- Stop
- ▶▶ Step Forward
- ▶ Play / Fast Forward
- ▶▶ End

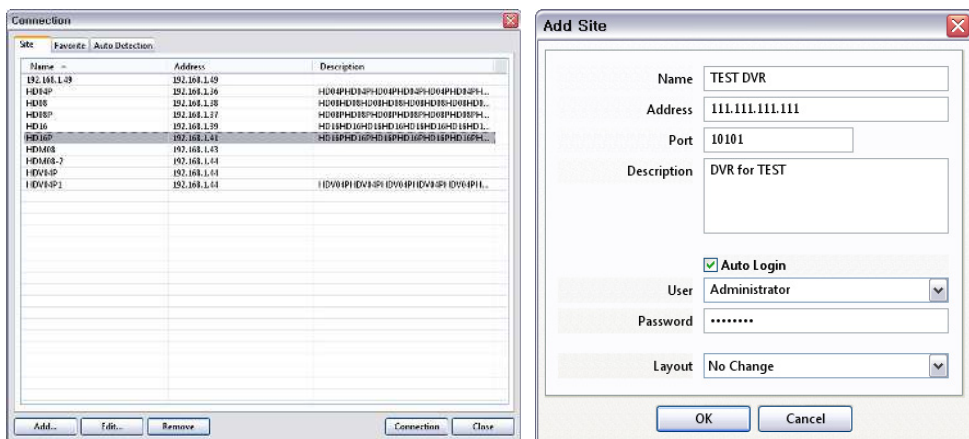
Click on icon to display time search window. Enter specific time to search the data



Click on icon refresh and update the calendar info.

4. Site Set Up

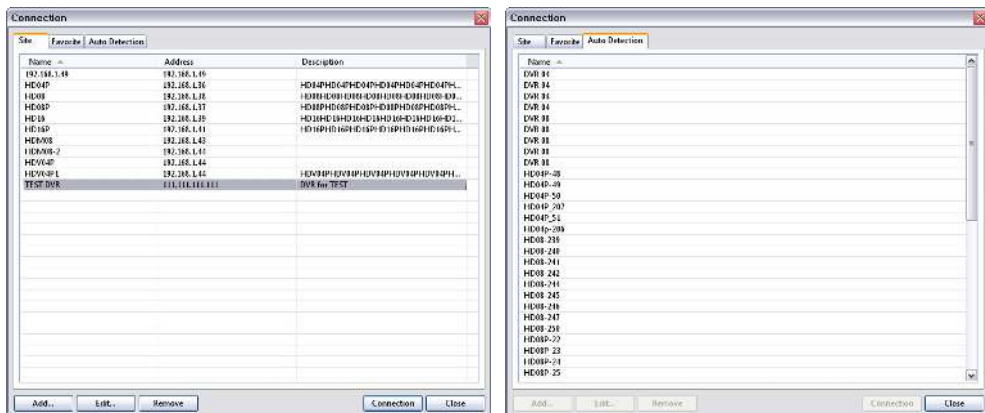
Click Connect button to display registered remote locations or add new locations.



Click Add button to add remote location and required information.

Click OK to save information and complete the registration.

Note: Layout can be changed after begin connected using the display option on the menu.

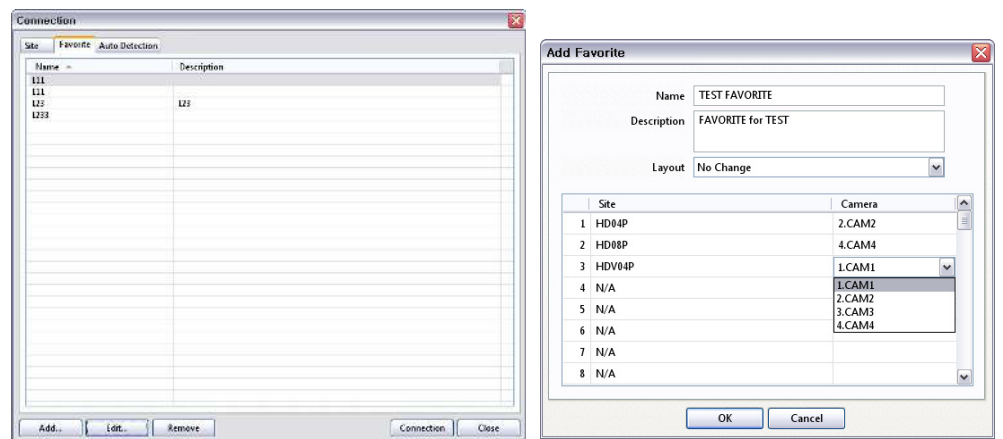


The DVR and Client program on PC start searching each other once they are on the same local network. The Auto Detection menu shows the DVRs detected on the same local network.

Note: Auto Detection finds DVRs on the local network automatically. To use this function, Apple® Bonjour® needs to be installed in PC. Please refer to <http://www.apple.com/bonjour> for more details and download.

5. Favorite Set Up

Favorite function allows multi site management. Up to 64 different cameras and sites can be monitored and managed on one screen. Select Favorite tap.

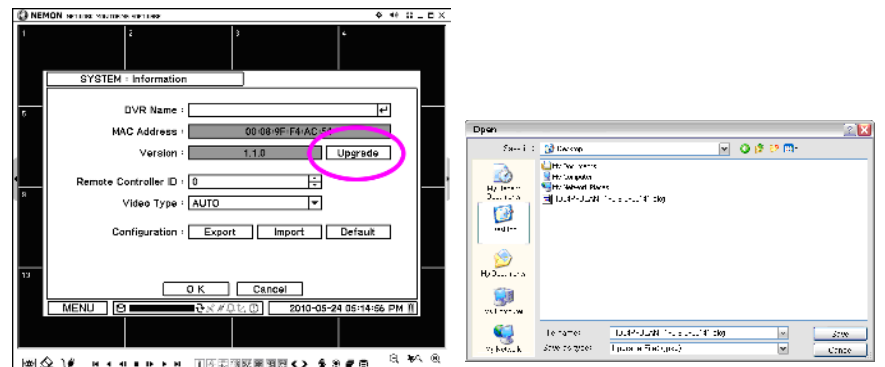


Click Add button to group multiple sites as one favorite group. Enter the group name and description. Up to 64 different cameras or sites can be grouped and displayed together. Select sites and cameras from the drop down list by clicking button.

Note: Sites should be registered under 'Site' menu before setting the favorite.

6. Remote Upgrade

The system upgrade can be done through Nemon program on PC.



- Click on and Remote Setup to enter remote setup menu.
- Select Information under System.
- Click Upgrade next to S/W version to find a file for upgrade
- Select the file location and the file to upgrade the system.

Note: Please do not close down Nemon S/W or power off a computer until the system upgrade is completed.